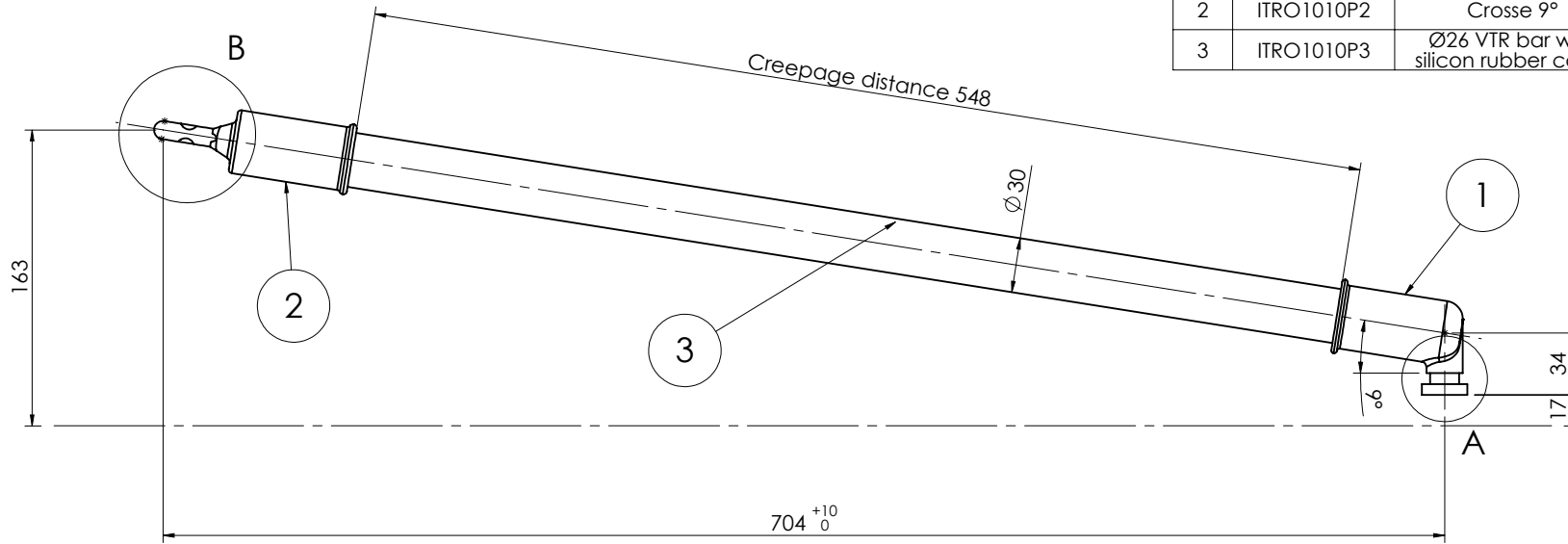
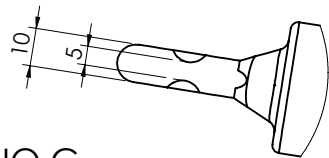


POS.	CODE	DESCRIPTION	Q.TY	MATERIAL
1	ITRO1010P1	Embout à anneau	1	CuAl10Fe2-C-GM EN 1982
2	ITRO1010P2	Crosse 9°	1	CuAl10Fe2-C-GM EN 1982
3	ITRO1010P3	Ø26 VTR bar with silicon rubber cover	1	VTR + silicon rubber

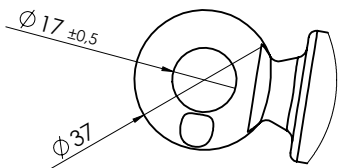


DRAFT

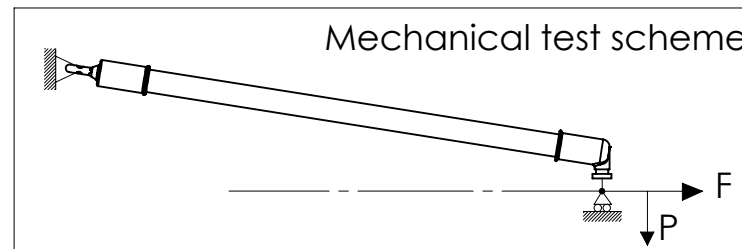
DETTAGLIO B
SCALA 1 : 2



DETTAGLIO C
SCALA 1 : 2



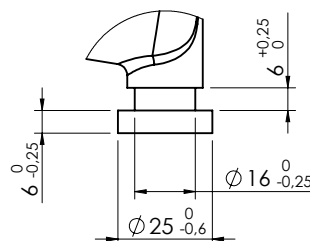
ITRO1010-1: horizontal ring
ITRO1010-2: vertical ring



F: 500 daN
P: 0,55 daN

1 min. dry withstanding voltage: 30 kV
1 min. wet withstanding voltage: 30 kV

DETTAGLIO A
SCALA 1 : 2



01	12/07/2018	Second draft	S. Luciani	F. Terrenzio	J. Ansèlme
00	10/01/2018	First draft	S. Luciani	F. Terrenzio	J. Ansèlme
Rev.	Date	Description	Drawn	Verified	Approved

1 - Dimensions in mm
2 - General tolerances: ± 0,2 mm

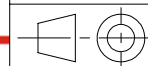
Description Insulated straight steady arm - L= 0,7 m

Article code **ITRO1010**

Process
Poinds 1,6 kg ± 5%



ITRO RAIL



Scale 1:4 A4
Sheet 1/1

This drawing, the particulars and the contained information are property of ITRORAIL and OCS2. Any unauthorised reproduction and/or use are prohibited by law.