

1

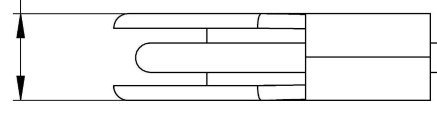
2

B

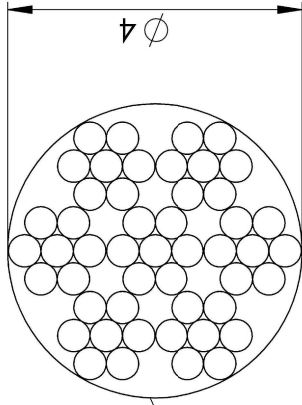
A

Rep.	Désignation	Matière
1	Passe-câble	PA6,6
2	Câble	Inox 316 7X7
3	Embout	Inox 316 L

11,80



∅ 4

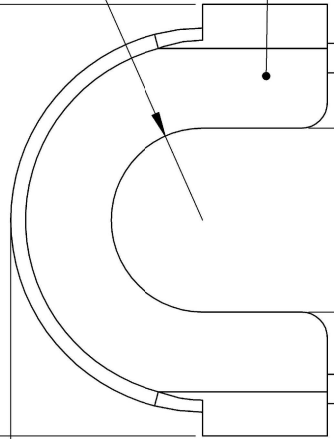


Charge de rupture :

- Elingue montée dans la pince 1700 daN

R12,50

58,70



1

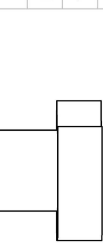
2

3

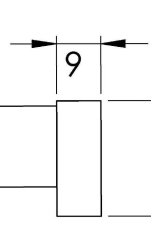
25

Longueur variable

36



∅ 11



∅ 9

15,71

14,73

∅ 19

NOM

DATE

DESSINATEUR

A.P.

16/12/20

VERIFICATEUR

J.A.

16/12/20

MATIERE :

POIDS : 0,11 KG



ELINGUE PINCE D'ANCRAGE

FORMAT NO. PLAN

REV

A4 ELING

∅

ECHELLE: 1:1

FEUILLE 1/1

1

2

B

A